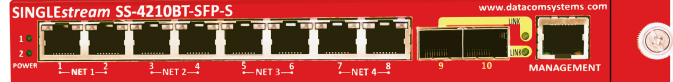




# SINGLEstream™

## SS-1200, SS-2200, and SS-4200 series

### Single, Dual and Quad Link Aggregation Taps



#### FULL DUPLEX VISIBILITY

These Datacom taps are a compact and flexible solution for tapping, aggregating and distributing data from both sides of duplex links. Offered for 10/100/1000 copper links and for 1G multimode or single mode fiber links, many monitor port options are available.

#### AGGREGATION AND REPLICATION

Any-to-Any functionality allows traffic copies from either side of a tapped duplex link to be aggregated together and sent out a single monitor port to one or more tools - optimal for tools that have only a single capture interface (NIC.) This data can also be sent separately out two monitor ports. On models with more than two monitor ports, additional monitoring tools can be deployed, or these ports can serve as additional inputs - allowing data copies from SPAN ports to be combined with data.

#### POWER FAULT TOLERANCE

Fiber models utilize completely passive optical splitters for tapping. There is zero impact on the tapped link other than a moderate amount of insertion loss. Copper models have a failsafe power fault tolerance feature. It allows traffic to pass on the link if the tap loses power. In all cases, the taps are invisible to the network link in which they are inserted, and add no statistically significant latency.

#### LINKprotect™

Copper taps maintain separate physical links between each of their Network ports and the tapped link endpoints. The user configurable LINKprotect™ feature ensures that if one link endpoint fails, the other endpoint device becomes aware immediately, and can take appropriate action (e.g. engaging OSPF.) Recovery can be configured to be automatic or manual.

#### MEDIA TYPE, NUMBER OF LINKS AND PORT CHOICES

Taps are available for 10/100/1000 copper, 50 micron or 62.5 micron multimode fiber, or 9 micron single mode fiber.

Copper and fiber models are offered for single or dual links, with a quad link model available in copper only.

Network tap ports are RJ45 for copper models and LC for fiber models.

Depending on model, monitor ports can be copper RJ45, SFP based for fiber or copper, or in some models a combination of both types.

#### HIGHLIGHTS

- Consolidate monitoring tools to reduce management expenses and lower tool costs
- Monitor one or more 10/100/1000 copper or 1G fiber links with single interface (capture NIC) tools
- Fault tolerant - passive bypass feature for copper links and totally passive tapping for fiber links
- Eliminate reliance on SPAN ports

#### FEATURES

- Tap up to four links per tap and up to 8 links in 1RU rack mount chassis (depending on model)
- Models with SFP monitor ports support both copper and fiber SFPs
- Aggregation/Regeneration – Combine multiple network links or channels into one stream and/or send copies to multiple tools to share data sources
- SNMP V2 and V3 supported for traps to notify of link down or power supply failure states
- Redundant universal power supplies included
- Easy to use CLI for remote configuration, but can be configured and deployed as a non-managed device for greater security
- SSH can be enabled for secure remote communication with the management port



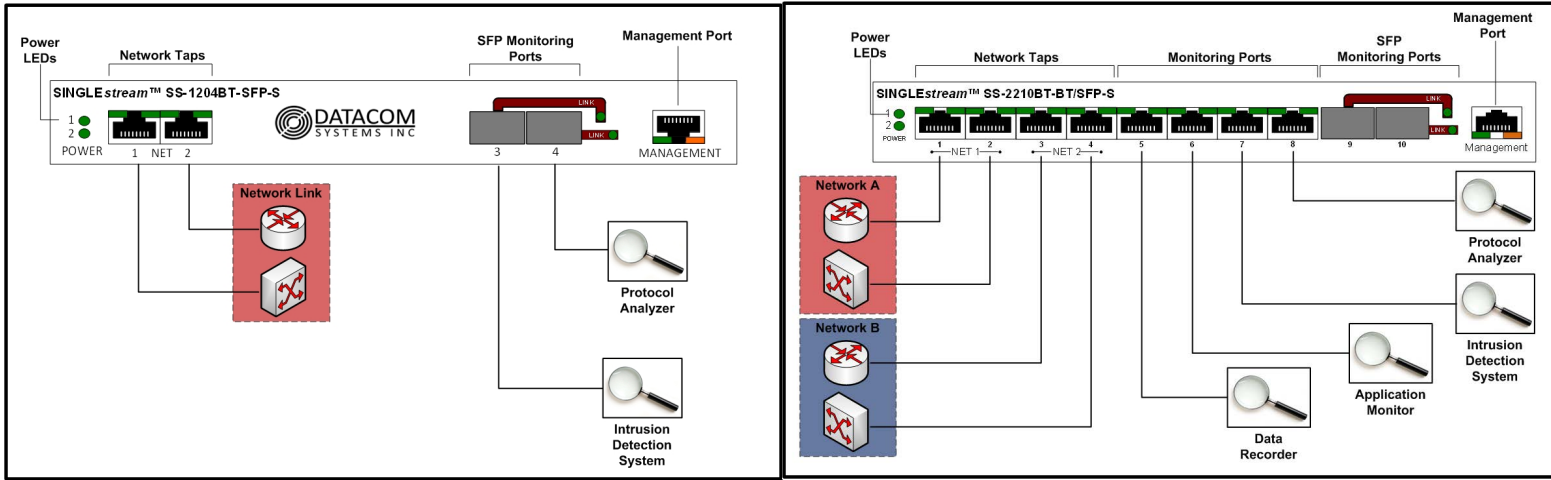


# SINGLEstream™

TM

## SS-1200, SS-2200, and SS-4200 series

### Single, Dual and Quad Link Aggregation Taps



### Technical Specifications

#### Network TAP and Monitor Ports

##### For Copper Links

**SS-1204BT-BT-S:** One copper 10/100/1000 tap (2 ports per tap,) and two (2) copper 10/100/1000 Any-to-Any ports

**SS-1204BT-SFP-S:** One copper 10/100/1000 tap (2 ports per tap,) and two (2) SFP Any-to-Any ports

**SS-2206BT-BT-S:** Two copper 10/100/1000 taps (2 ports per tap,) and two (2) copper 10/100/1000 Any-to-Any ports

**SS-2210BT-BT-S:** Two copper 10/100/1000 taps (2 ports per tap,) four (4) copper 10/100/1000 and two (2) SFP Any-to-Any ports

**SS-4210BT-SFP-S:** Four (4) copper 10/100/1000 taps (2 ports per tap,) and two (2) SFP Any-to-Any ports

##### For Fiber Links

**SS-1204SX-BT-S:** One LC Multimode tap (two ports per tap - specify 50 or 62.5 micron) and two (2) copper 10/100/1000 Any-to-Any ports

**SS-1204LX-BT-S:** One LC Single Mode tap (two ports per tap - 9 micron) and two (2) copper 10/100/1000 Any-to-Any ports

**SS-1204SX-SFP-S:** One LC Multimode tap (two ports per tap (specify 50 or 62.5 micron) and two (2) SFP Any-to-Any ports

**SS-1204LX-SFP-S:** One LC Single Mode tap (two ports per tap - 9 micron) and two (2) SFP Any-to-Any ports

**SS-2206SX-SFP-S:** Two LC Multimode taps (two ports per tap - specify 50 or 62.5 micron,) and two (2) SFP Any-to-Any ports

**SS-2206LX-SFP-S:** Two LC Single Mode taps (two ports per tap - 9 micron) and two (2) SFP Any-to-Any ports

**SS-1210SX-BT-S:** One LC Multimode tap (two ports per tap - specify 50 or 62.5 micron,) and eight (8) copper 10/100/1000 Any-to-Any ports

**SS-1210LX-BT-S:** One LC Single Mode tap (two ports per tap - 9 micron) and eight (8) copper 10/100/1000 Any-to-Any ports

#### MANAGEMENT AND CONFIGURATION PORTS

Management (front): RJ45 @ 100 Mbps

Full-Duplex Serial (rear): DB9F

#### Power Requirements

Two (2) External AC Adapters (included)

Input: 100-240 VAC, 50-60Hz, 0.8A

#### Certifications

CE, RoHS, CAN ICES-3 (B)/NMB-3(B)

#### Physical Dimensions (H x W x D)

1.10 x 8.00 x 7.00 in (2.79 x 20.32 x 17.78 cm)

#### Weight

1.6 lbs (0.7 kgs)

#### Environment

Operating Temperature: 32° to 104°F (0° to 40°C)

Storage Temperature: -22° to 149°F (-30° to 65°C)

Humidity: 5 to 90% non-condensing

#### Fiber TAP Insertion Loss (approximate - per fiber)

Multimode 50/50 -4.2 dB

Single Mode -3.9 dB

Multimode 70/30 -3.0 dB / -6.7dB

Single Mode 70/30 -2.2 dB / -6.3 dB

#### Warranty

One (1) Year Hardware and Software support included.

Premium Support option available

#### ORDERING INFORMATION

##### Order taps using model numbers in column on left

1) Specify 50 or 62.5 micron for multimode fiber tap models

2) Specify 50/50 or 70/30 split ratio for all fiber tap models

#### RACK MOUNTS Descriptions

RMC-3	(for 1200 series TAPS)	1RU - holds 3 taps
RMC-3-12	(for 1200 series TAPS)	4RU - holds 12 taps
RMC-2	(for 2200 / 4200 series TAPS)	1RU - holds 2 taps
RMC-2-12	(for 2200 / 4200 series TAPS)	6RU - holds 12 taps